



CSP:

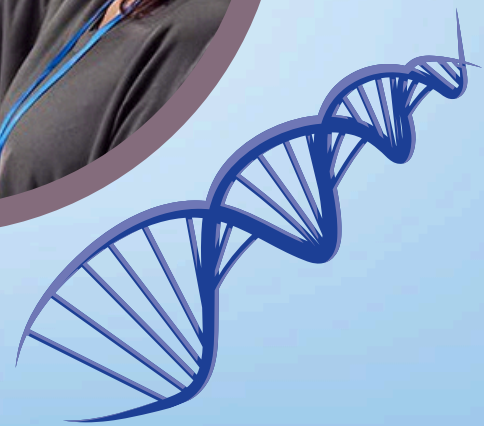
California Society of Pathologists

78TH ANNUAL SEMINARS IN PATHOLOGY

2025 EXHIBITOR PROSPECTUS

DECEMBER 4-6, 2025

WESTIN LONG BEACH | LONG BEACH, CA



DECEMBER 4-6, 2025

**WESTIN LONG BEACH
LONG BEACH, CA**



Why Should You Exhibit



Gain exposure at the largest gathering of board-certified pathologists



Connect with pathologists, practice managers, professors, and residents



Engage with a key audience at California's leading pathology-focused CME program



Showcase your products and services to influential decision-makers in the field



Demonstrate your commitment to advancing pathology and medical education



DECEMBER 4-6, 2025

**WESTIN LONG BEACH
LONG BEACH, CA**

Exhibitor Schedule

(Tentative)

Wednesday, December 3

2:00pm – 6:00pm | Exhibitor Move-in

Thursday, December 4

7:30am – 9:00am | Continental Breakfast in Exhibit Hall

10:00am – 10:30am | Refreshment Break in Exhibit Hall

12:30pm – 2:00pm | Lunch on your Own

This is a great opportunity to take attendees that are current or potential clients out for a meal.

3:00pm – 3:30pm | Refreshment Break in Exhibit Hall

5:00pm – 6:30pm | Welcome Reception in Exhibit Hall

Friday, December 5

7:30am – 9:00am | Continental Breakfast in Exhibit Hall

10:00am – 10:30am | Refreshment Break in Exhibit Hall

12:30pm – 2:00pm | Lunch on your Own

This is a great opportunity to take attendees that are current or potential clients out for a meal.

3:00pm – 3:30pm | Refreshment Break in Exhibit Hall

Saturday, December 6

7:00am – 8:30am | Continental Breakfast in Exhibit Hall

10:00am – 10:30am | Refreshment Break in Exhibit Hall

10:30am – 12:30pm | Exhibitor Move-out

DECEMBER 4-6, 2025

WESTIN LONG BEACH
LONG BEACH, CA



Hotel & Accommodations

The Westin Long Beach

333 E. Ocean Blvd, Long Beach, CA 90802

Room Rate: \$264 single/double

Hotel Cut-off: Monday, November 10, 2025, or until room block is sold out.

Check-In: 4:00pm / Check-Out: 12:00pm

RESERVE YOUR ROOM





DECEMBER 4-6, 2025

**WESTIN LONG BEACH
LONG BEACH, CA**

Exhibitor Opportunities

- **Platinum Level - \$10,000**

- Two (2) 6' draped table(s) and two chairs
- Four (4) complimentary badges for company representatives
- Two (2) complimentary tickets to the Awards & Recognition Dinner (RSVP required)
- One (1) E-blast with your message sent out to CSP Members
- Premium listing on the meeting website (Company Logo Key Contact, Description & Link)
- On-Site Meeting Recognition
- Sponsor listing on the CSP Website (Logo & Link)
- Pre/Post Attendee List

- **Gold Level - \$7,500**

- One (1) 6' draped table(s) and two chairs
- Four (4) complimentary badges for company representatives
- Two (2) complimentary tickets to the Awards & Recognition Dinner (RSVP required)
- Premium listing on the meeting website (Company Logo Key Contact, Description & Link)
- On-Site Meeting Recognition
- Sponsor listing on the CSP Website (Logo & Link)
- Pre/Post Attendee List



DECEMBER 4-6, 2025

**WESTIN LONG BEACH
LONG BEACH, CA**

Exhibitor Opportunities

(Continued)

- **Silver Level - \$5,000**

- One (1) 6' draped table(s) and two chairs
- Two (2) complimentary badges for company representatives
- One (1) complimentary ticket to the Awards & Recognition Dinner (RSVP required)
- Premium listing on the meeting website (Company Logo Key Contact, Description & Link)
- On-Site Meeting Recognition
- Sponsor listing on the CSP Website (Logo & Link)
- Pre/Post Attendee List

- **Bronze Level - \$3,000**

- One (1) 6' draped table(s) and two chairs
- Two (2) complimentary badges for company representatives
- Basic listing on the meeting website (Company Name & Key Contact)
- Sponsor listing on the CSP Website (Logo & Link)
- On-Site Meeting Recognition
- Pre/Post Attendee List

- **Exhibit Booth Only - \$2,250**

- One (1) 6' draped table(s) and two chairs
- Two (2) complimentary badges for company representatives
- Basic listing on the meeting website (Company Name & Key Contact)



DECEMBER 4-6, 2025

**WESTIN LONG BEACH
LONG BEACH, CA**

A La Carte Sponsorship Opportunities

- **Lanyard Sponsor - \$1,500**
 - Logo on attendee lanyards
 - Recognition on event website and signage
- **Break Sponsor - \$2,500** (5 available)
 - Logo on signage at break stations
 - Option to provide branded coffee cups, napkins, or snack packaging Recognition on event website and signage
- **Tote Bag Sponsor - \$3,000**
 - Logo on attendee tote bags
 - Option to include one promotional item or flyer in the bag (provided by sponsor)
 - Recognition on event website and signage
- **Breakfast Sponsor - \$3,500** (3 available)
 - Logo on signage at the breakfast area
 - Logo on coffee sleeves at the event
 - Recognition on event website and signage
- **Reception Sponsor - \$5,000** (Exclusive)
 - Recognition as the exclusive sponsor of the reception
 - Logo on cocktail napkins at the event
 - Recognition on event website and signage
 - Logo with link on the CSP Website

INTERESTED IN A CUSTOMIZED SPONSORSHIP OPPORTUNITY?

CONTACT FELICIA PRICE AT FPRICE@AMGROUP.US OR CALL 916-446-6001 X112



DECEMBER 4-6, 2025

WESTIN LONG BEACH LONG BEACH, CA

CSP Awards & Recognition Dinner Tickets and Sponsorships

- **Presenting Sponsor - \$5,000** (Exclusive)

- Exclusive branding as the Presenting Sponsor on the conference website, social media posts
- Two (2) complimentary tickets to the Awards & Recognition Dinner (RSVP required)
- Opportunity to be seated with distinguished faculty, providing a unique chance for engaging conversation and meaningful connections
- Logo placement on the CSP website with a link to your company's website
- Opportunity to deliver a 3-minute special address at the event
- Logo and recognition in all awards dinner-related marketing
- Opportunity to include promotional materials at the dinner
- Special recognition during the event's opening remarks

- **Dinner Sponsor - \$2,500** (2 available)

- Recognition as a Dinner Sponsor on the conference website, social media posts
- Opportunity to be seated with distinguished faculty, providing a unique chance for engaging conversation and meaningful connections
- Logo placement on the CSP website with a link to your company's website
- Logo and recognition in all awards dinner-related marketing



DECEMBER 4-6, 2025

**WESTIN LONG BEACH
LONG BEACH, CA**

CSP Awards & Recognition Dinner Tickets and Sponsorships

(Continued)

- **Awards Dinner Cocktail Sponsor - \$2,250**
 - Recognition as the exclusive sponsor of the hosted bar
 - Company logo on bar signage and cocktail napkins
 - Logo placement on the event website and promotional materials
 - Option to provide branded drinkware or cocktail stirrers
- **Table Sponsor - \$1,750 (6 available)**
 - Reserved table(s) at the event
 - Opportunity to fill your sponsored table with YOUR invited guests, providing a unique networking and branding opportunity for your organization
 - Recognition on the conference website, social media posts
- **Photo Booth Sponsor - \$1,500**
 - Company logo on the printed photos attendees take home
 - Recognition on the conference website, social media posts
- **Individual Awards Dinner Tickets - \$150 per person**



DECEMBER 4-6, 2025

WESTIN LONG BEACH LONG BEACH, CA

Obtain Year-round Visibility with CSP Members!

Webinars - \$5,000 per webinar (4 available)

- CSP seeks to host at least one webinar per quarter to provide timely and relevant information to California pathologists. Webinar topics might include practice management, career development, emerging clinical practices, cutting edge research and more. Sponsorship includes marketing in all member eblasts, communications to non-members, social media posts, web page advertising and profile in monthly e-newsletter. CSP seeks to host at least 50 people on the webinar, including a combination of residents, pathologists, lab professionals and industry.

Web Page Advertising - \$100 per month / \$750 per year

- CSP seeks to provide at least six opportunities for advertisements on the front page of its web page, within a rotating banner. Advertisements will be seen each time an individual visits the front page of the web page. CSP currently experiences 4,883 visits per year, which is expected to increase with a renewed emphasis on member communications and engagement.

Monthly E-Newsletter Ad - Banner headline ad: \$250 per month; \$1,500 per year; Internal ad: \$100 per month; \$750 per year.

- CSP will publish a monthly electronic newsletter to be distributed to CSP members and non-member pathologists in California (1,000 distribution). The e-newsletter will also be promoted via social media, linked to the e-newsletter on the CSP web page.



DECEMBER 4-6, 2025

**WESTIN LONG BEACH
LONG BEACH, CA**

Obtain Year-round Visibility of CSP Members!

(Continued)

Education Sessions - \$8,500 (2 available)

- These non-CME education-style sessions allow you the opportunity to be in front of our attentive audience. Direct access to pathologists allows for brand and product positioning while networking and engaging attendees. Recognition of your company on signage and the MMG (dedicated site for the event). Recognition on the CSP website with your company's link, and attendee list. Sponsor to pay for added cost- audio visual, etc.

Pathology Focus Group - \$10,000

- CSP seeks to host at least two focus groups each year with 12 members of the CSP Board of Directors and/or other leaders in the field of pathology in California. The objective is to allow corporate partners and researchers the ability to obtain direct feedback from California pathology leaders to help better inform their corporate decision making and/or research.

Questions?

Contact: Felicia Price, CMP

fprice@amgroup.us

REGISTER ONLINE



DECEMBER 4-6, 2025

WESTIN LONG BEACH LONG BEACH, CA

Terms and Conditions

Conditions of Eligibility

California Society of Pathologists (CSP) reserves the right to determine the eligibility of any company wishing to exhibit. All products and services to be exhibited must be related to the pathology profession. CSP may deny or revoke eligibility based on a violation of any policy set forth in these terms and conditions or for any action determined by CSP to detract from the objectives of the Meeting.

Payment and Cancellation

Full payment is due at the time the exhibitor application is submitted. All cancellations must be made in writing. Payment must be received by November 21, 2025, or the CSP reserves the right to cancel the Exhibitor's contract. A \$100 processing fee will be assessed to all cancellations. No refunds will be issued after October 31, 2025.

Assignment of Exhibit Space

Exhibitor may consider their space as reserved upon acceptance of the application. However, placement will not be assigned until full payment has been received. Exhibitor will be assigned the next available space upon payment in full. The CSP Show management reserves the right to assign exhibit space, change the floor plan or move Exhibitor's exhibit space, without prior notice, if the CSP Show management determines that it is in the best interest of the CSP Show.

Subletting Space

No exhibitor shall assign, sublet or apportion the whole or any part of the space assigned. In addition, no exhibitor shall have representatives, equipment, or materials from other companies other than their own in said exhibit space without the written consent of CSP.

Shipping

Exhibitors are responsible for all shipping and handling fees to and from the meeting venue.

There is no General Contractor, so all freight companies must unload and load materials themselves. Exhibitor agrees to abide by all Hotel/Union rules, if applicable. All exhibit materials must be assembled by the end user unless other arrangements have been made.

Admission & Display Rules

Admission to Annual Meeting events requires an official CSP badge or ticket, which must be worn at all times, including during setup and breakdown. Exhibitors' clients and guests must register with CSP and pay any applicable fees.

Each exhibitor will receive a draped six-foot table (24" deep, 30" tall), two chairs, and a trash can. Free-standing displays or products may replace the table but must not exceed 78" in height, 30" in depth, and 8' in width. No bolts, screws, hooks, or nails may be attached to exhibit area walls or floors. Aisles must remain clear per Fire Marshal regulations; obstructing items will be removed.

Electricity, Internet and Audio-Visual Equipment

If your exhibit space requires electricity, you are responsible for arranging your services through Encore Event Technologies at the Westin Long Beach.

Liability

Each exhibitor assumes the entire responsibility and liability for losses, damages, and claims arising out of injury or damage to the exhibitor's displays, equipment, and other property brought upon the premises of the hotel. Exhibitor shall indemnify and hold harmless CSP, the Westin Long Beach and any authorized representative or employee of the foregoing of any and all losses, damages, and claims from any cause whatsoever.

Verbal Agreements

CSP will not be bound by any verbal agreements, representations, or statements between CSP, exhibitors, or the hotel staff. All agreements must be made in writing.

Agreement

By completing the Exhibitor Agreement, which includes these terms by reference, the exhibiting company agrees to comply with all rules, regulations, and CSP decisions. This contract becomes binding for both the supporting company and the association upon acceptance by CSP staff.